



# PATIENT MOVEMENT – MODIFIED AND NEW PROCESSES



Enterprise Applications Training  
LOMA LINDA UNIVERSITY HEALTH

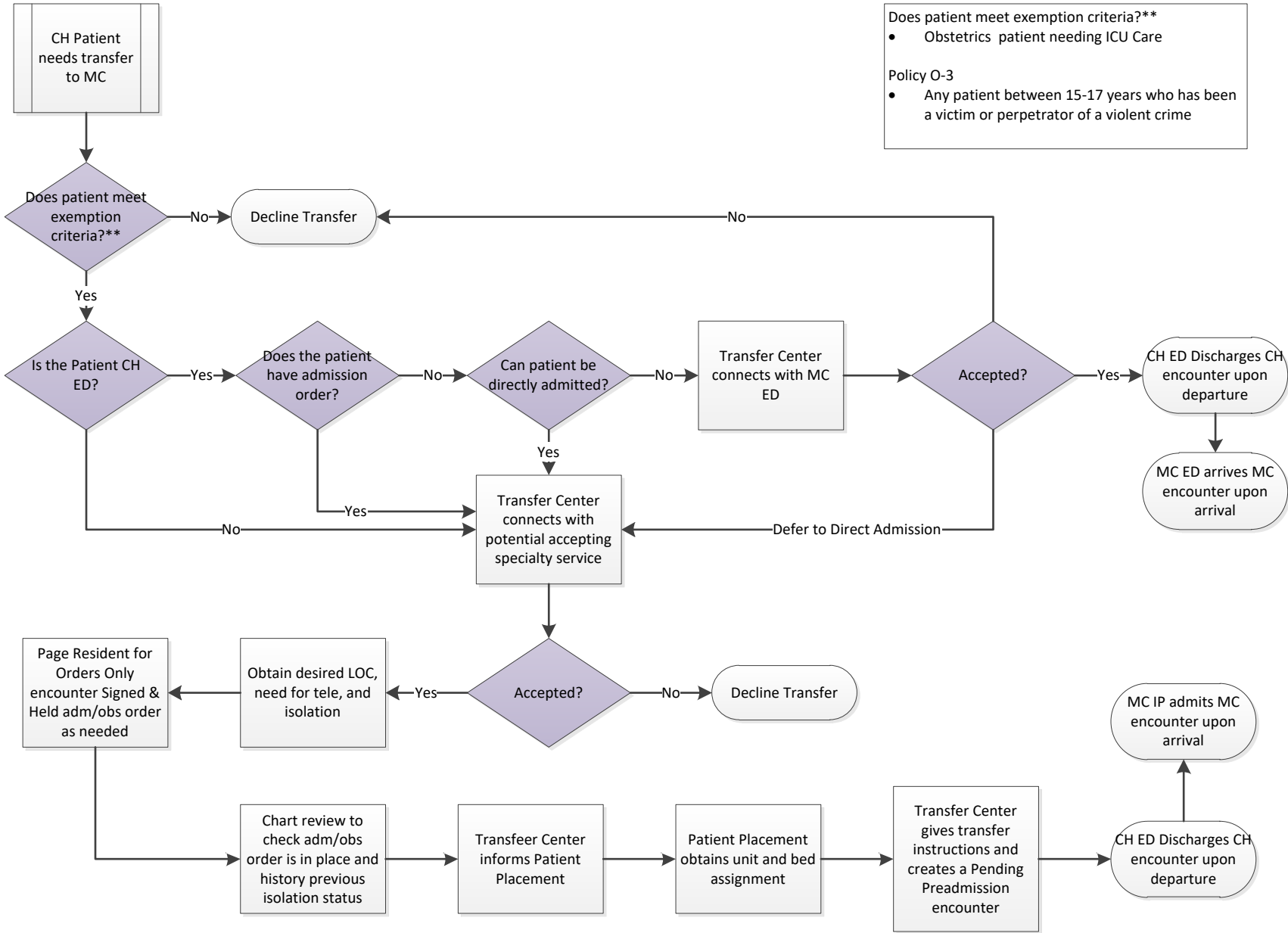
# Contents

Contents .....	1
Patient Movement Between the Two Hospitals – New Process .....	1
Children’s Hospital to Medical Center – ED/IP (NEW) .....	1
Medical Center to Children’s Hospital – ED/IP (NEW) .....	2
MC Changes to Current Patient Movement .....	3
MC ED to Periop Services - Adult .....	3
MC ED to Unit - Adult .....	3
MC ED to OP Observation (MC Only) .....	3
Advanced Urgent Care to Periop – CH .....	4
Periop Services – Adult to Unit – Adult .....	4
Periop Services – Adult to Rehab .....	5
Unit – Adult to BMC .....	5
Unit – Adult to Rehab .....	6
OP Observation to BMC .....	6
OP Observation to Rehab .....	7
OP Observation (EDOU) to Unit – Adult .....	7
OP Observation (EDOU) to OP Observation .....	7
MC New Patient Movement .....	8
MC ED to Periop Services – CH .....	8
MC ED to Unit - CH .....	8
MC ED to TCBC .....	8
MC ED to CVL/IR – Adult (NEW) .....	8
MC ED to Internal Medicine (NEW) .....	8
Advanced Urgent Care to Unit – CH .....	9
Unit – Adult to Unit – CH .....	9
OP Observation to Unit – Adult .....	9

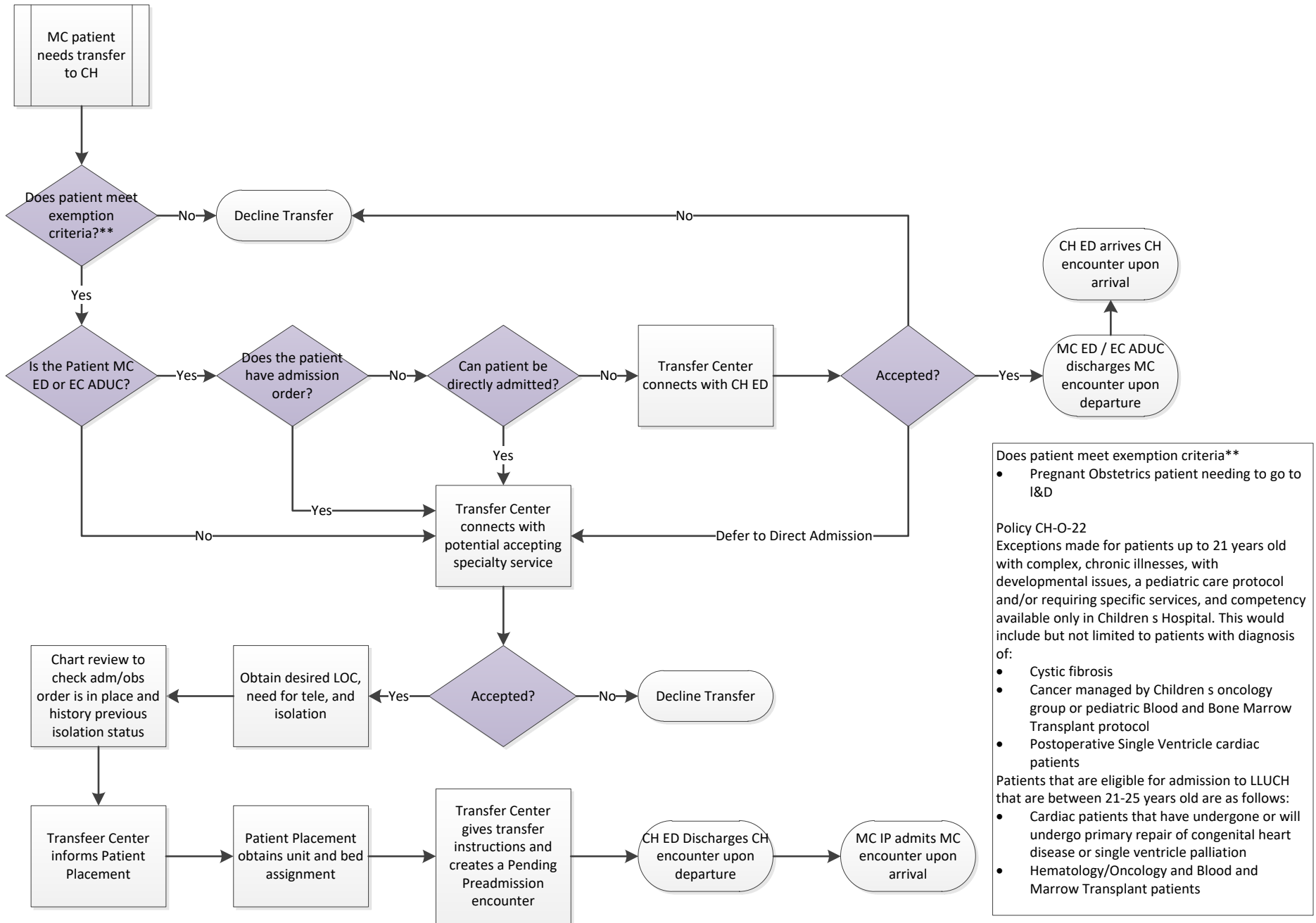
OP Observation (EDOU) to Unit – CH.....	9
OP Observation (EDOU) to Internal Medicine .....	9
CH Changes to Current Patient Movement .....	10
CH ED to Periop Services – CH .....	10
CH ED to Unit – CH.....	10
CH ED to OP Observation.....	10
Periop Services – CH to Unit – CH.....	11
Periop Services – CH to Rehab .....	11
Unit – CH to Periop Services – CH.....	11
Unit – CH to Rehab.....	12
CH New Patient Movement .....	13
CH ED to Periop Service – Adult.....	13
CH ED to Unit – Adult.....	13
CH ED to TCBC.....	13
Unit – CH to Unit – Adult.....	13
TCBC to NICU.....	13
Additional Admissions – New Process .....	14
Request for Routine Admit .....	14
Request for STAT/Urgent Admit – SACHS Clinic, LLUH Clinic After-Hours, LLUH Private – Privileged Providers.....	14
Request for STAT/Urgent Admit – LLUH Clinics.....	15
ED to ED .....	16
Interfacility Adult IP to IP Request.....	17

# Patient Movement Between the Two Hospitals – New Process

## Children’s Hospital to Medical Center – ED/IP (NEW)

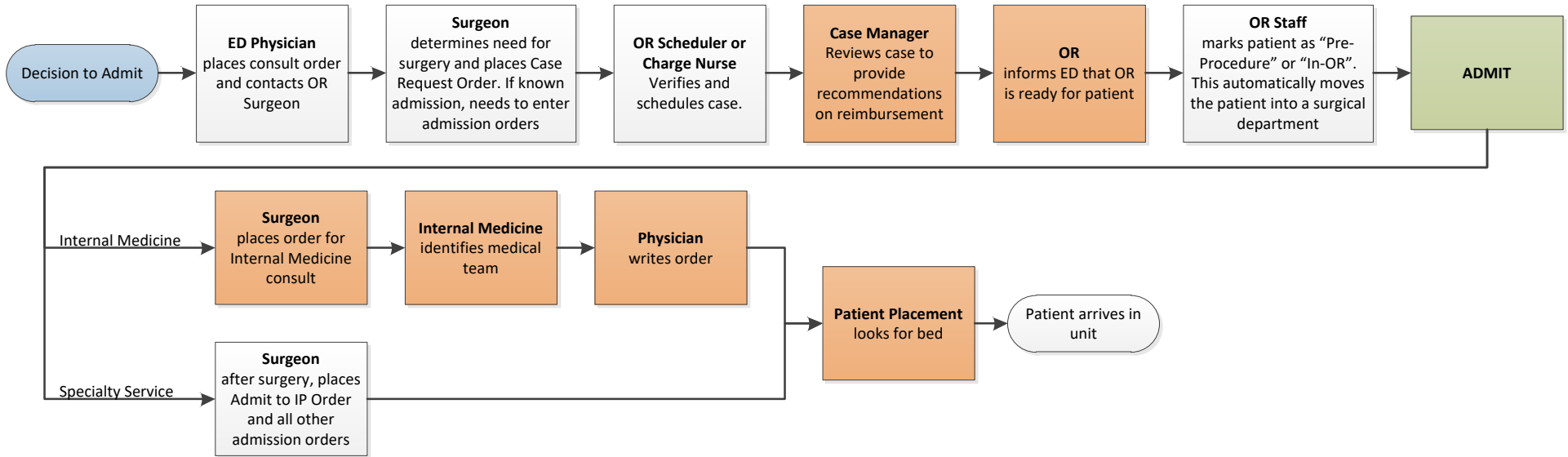


## Medical Center to Children's Hospital – ED/IP (NEW)

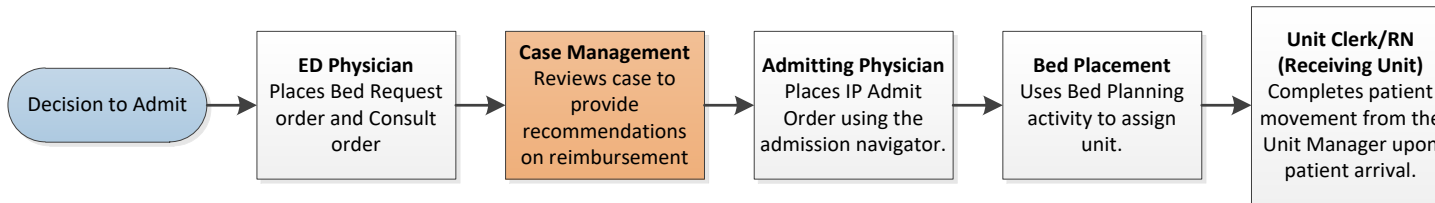


# MC Changes to Current Patient Movement

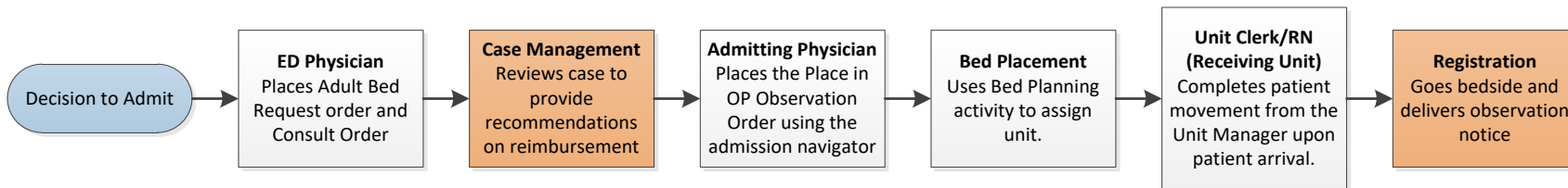
## MC ED to Periop Services - Adult



## MC ED to Unit - Adult

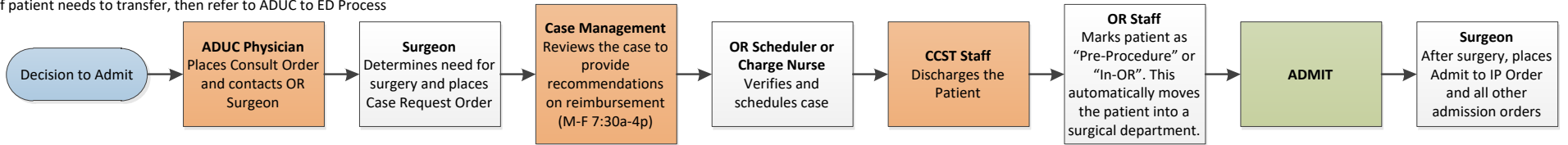


## MC ED to OP Observation (MC Only)

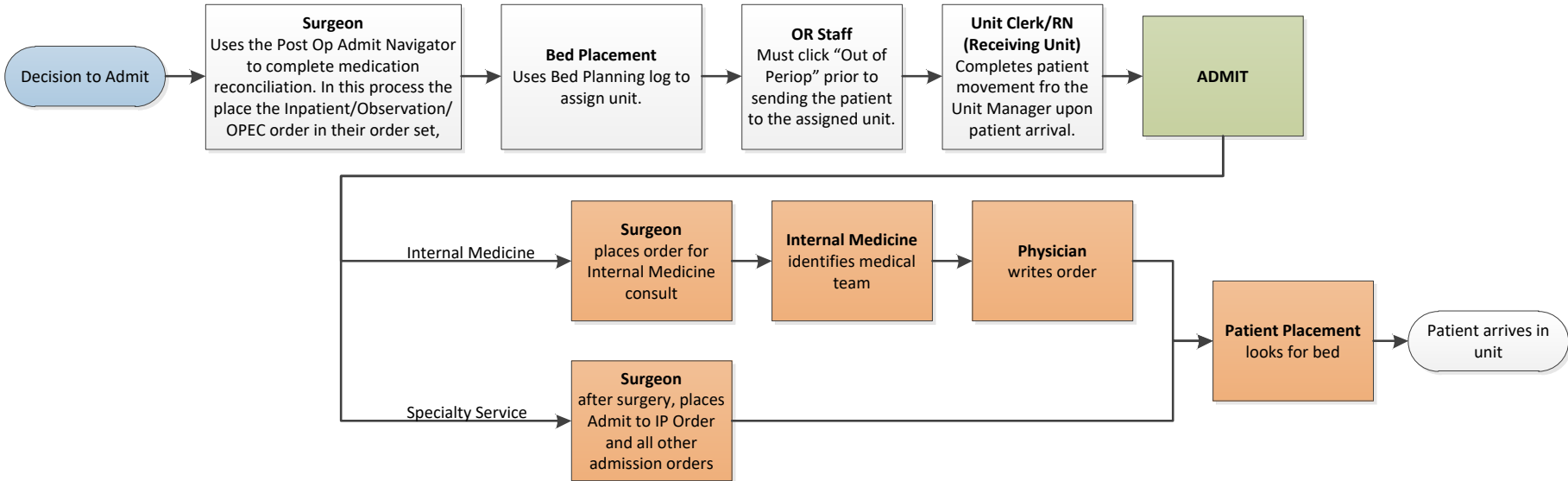


## Advanced Urgent Care to Periop – CH

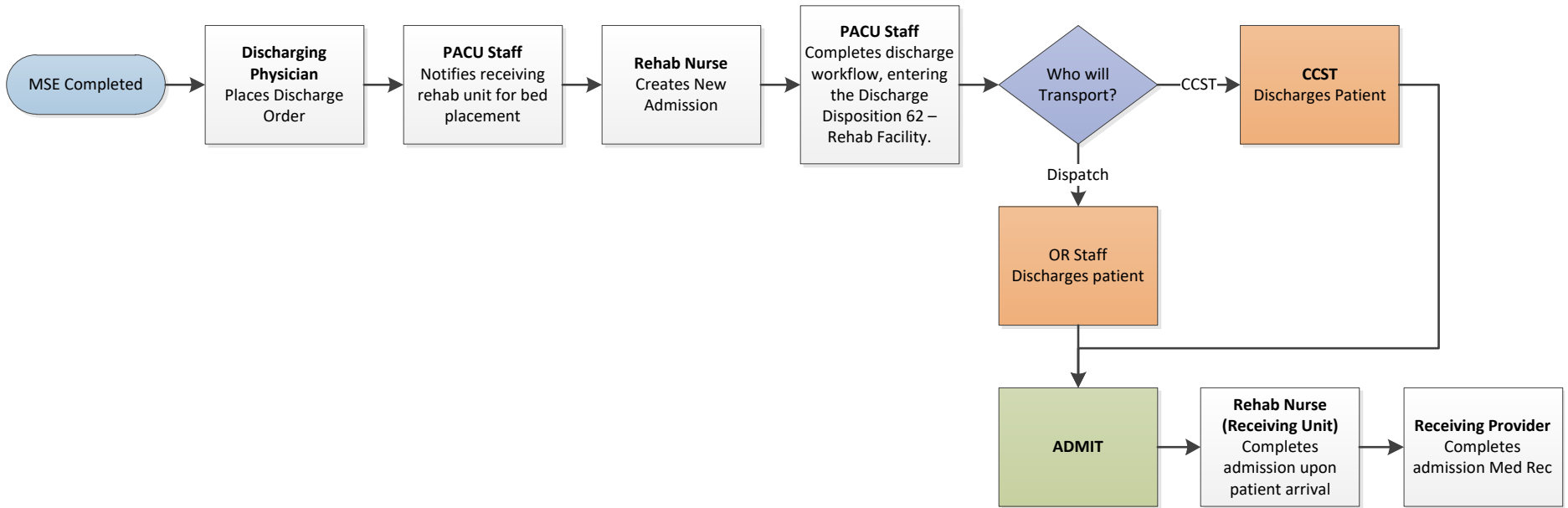
\*\*Urgent Care must transfer patients to the ED, unless surgeon has seen patient at UC.  
If patient needs to transfer, then refer to ADUC to ED Process



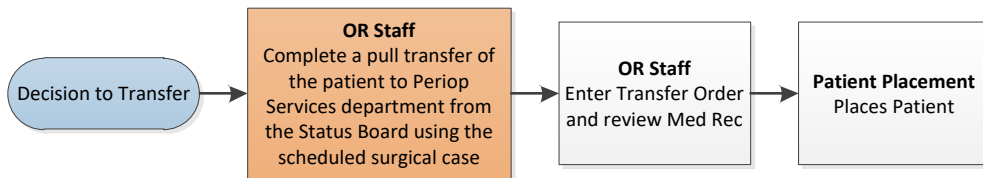
## Periop Services – Adult to Unit – Adult



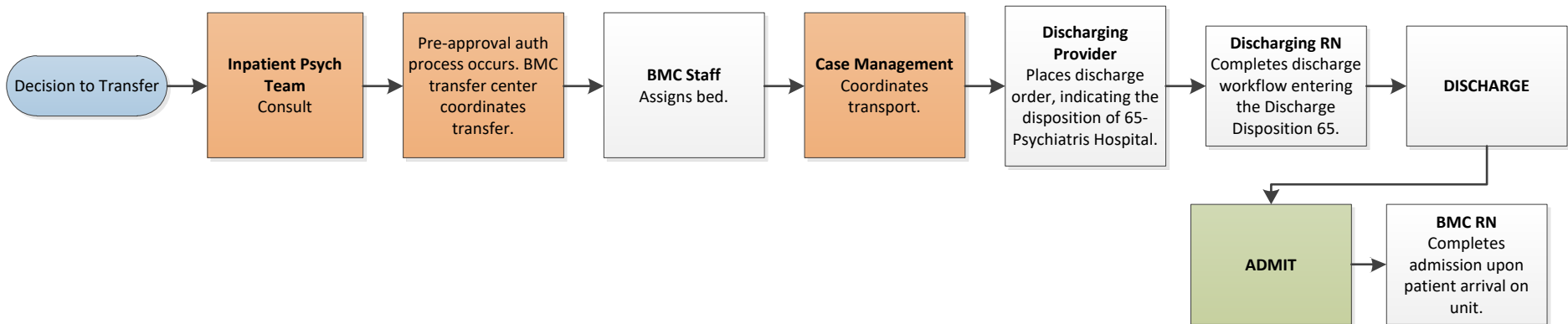
## Periop Services – Adult to Rehab



## Unit – Adult to Periop Services – Adult

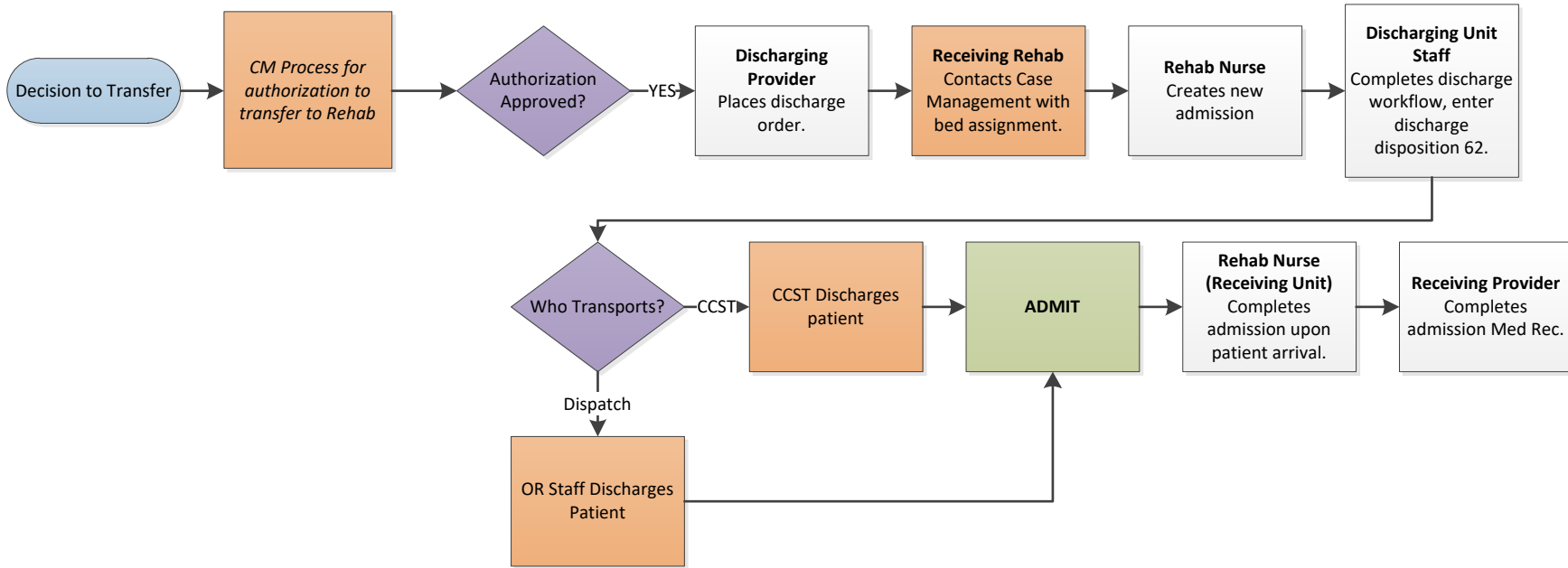


## Unit – Adult to BMC

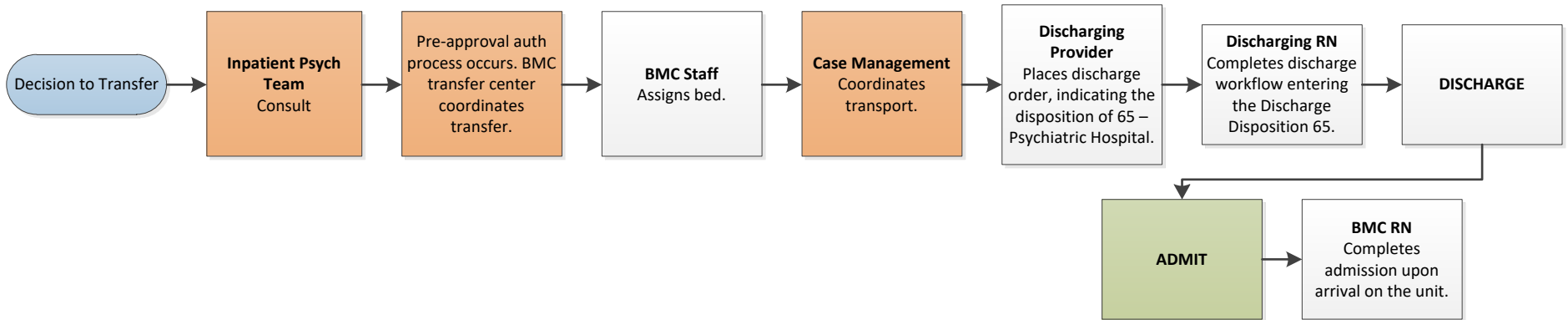




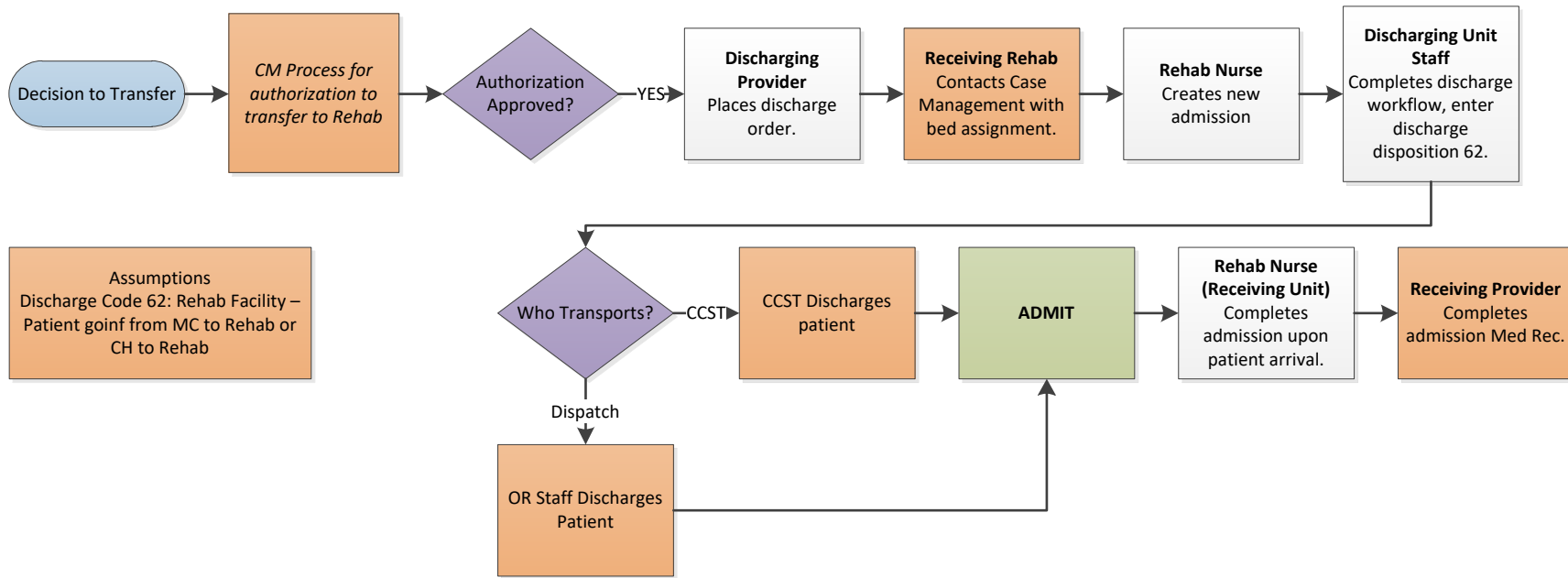
## Unit – Adult to Rehab



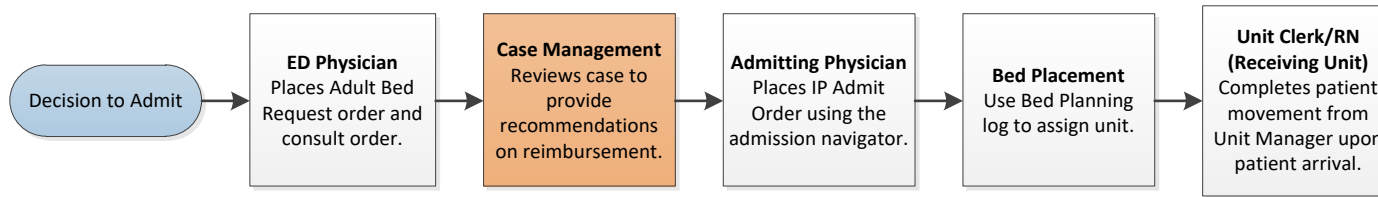
## OP Observation to BMC



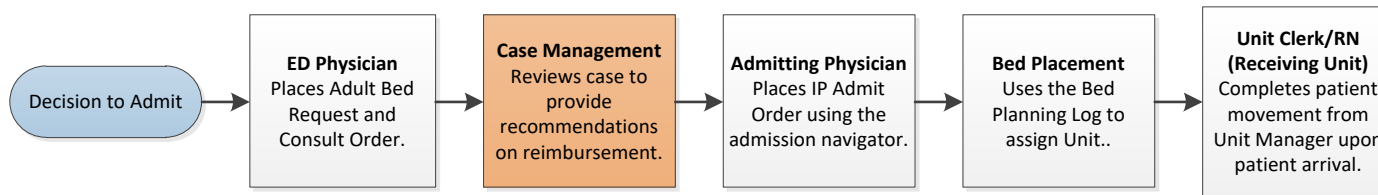
## OP Observation to Rehab



## OP Observation (EDOU) to Unit – Adult



## OP Observation (EDOU) to OP Observation



# MC New Patient Movement

MC ED to Periop Services – CH

Follow [Medical Center to Children’s Hospital](#)

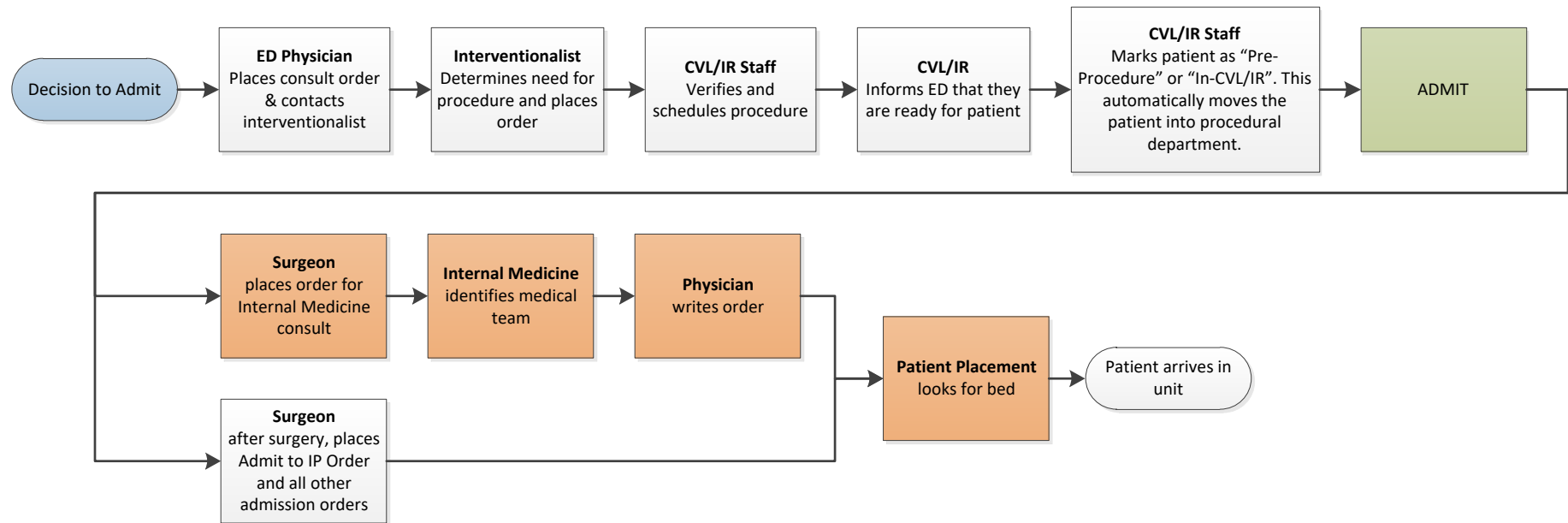
MC ED to Unit - CH

Follow [Medical Center to Children’s Hospital](#)

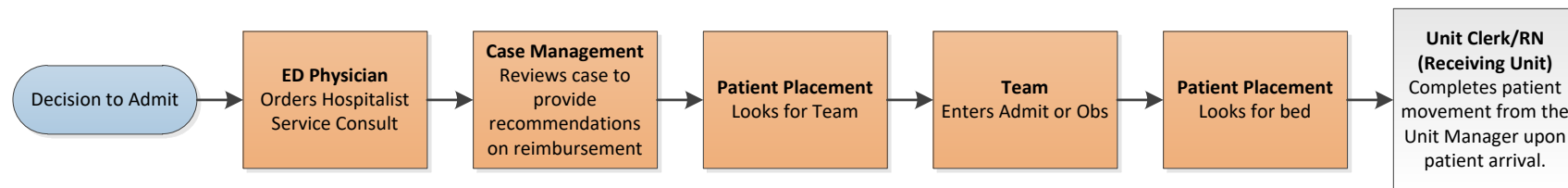
MC ED to TCBC

Follow [Medical Center to Children’s Hospital](#)

## MC ED to CVL/IR – Adult (NEW)

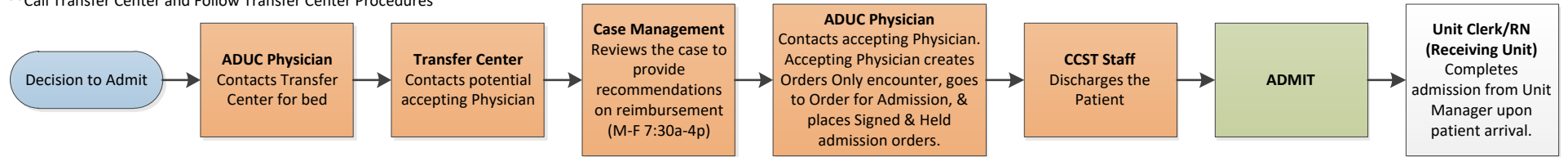


## MC ED to Internal Medicine (NEW)



## Advanced Urgent Care to Unit – CH

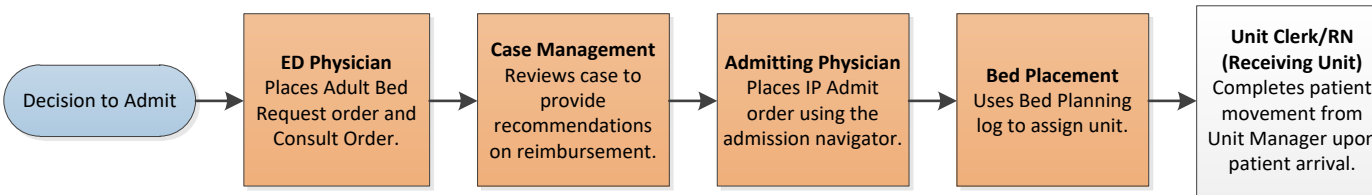
\*\*Call Transfer Center and Follow Transfer Center Procedures



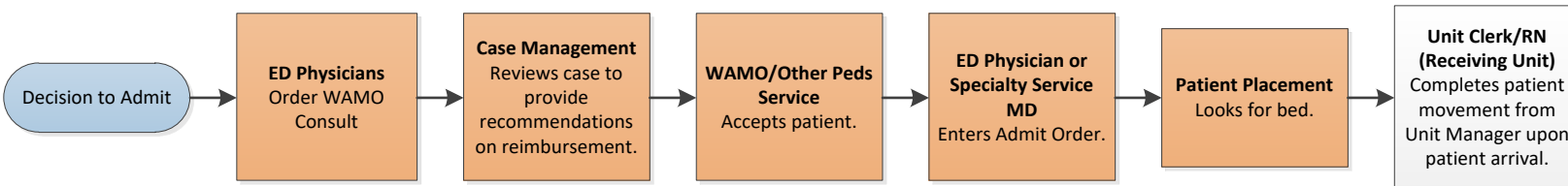
## Unit – Adult to Unit – CH

Follow [Medical Center to Children’s Hospital](#)

### OP Observation to Unit – Adult



### OP Observation (EDOU) to Unit – CH

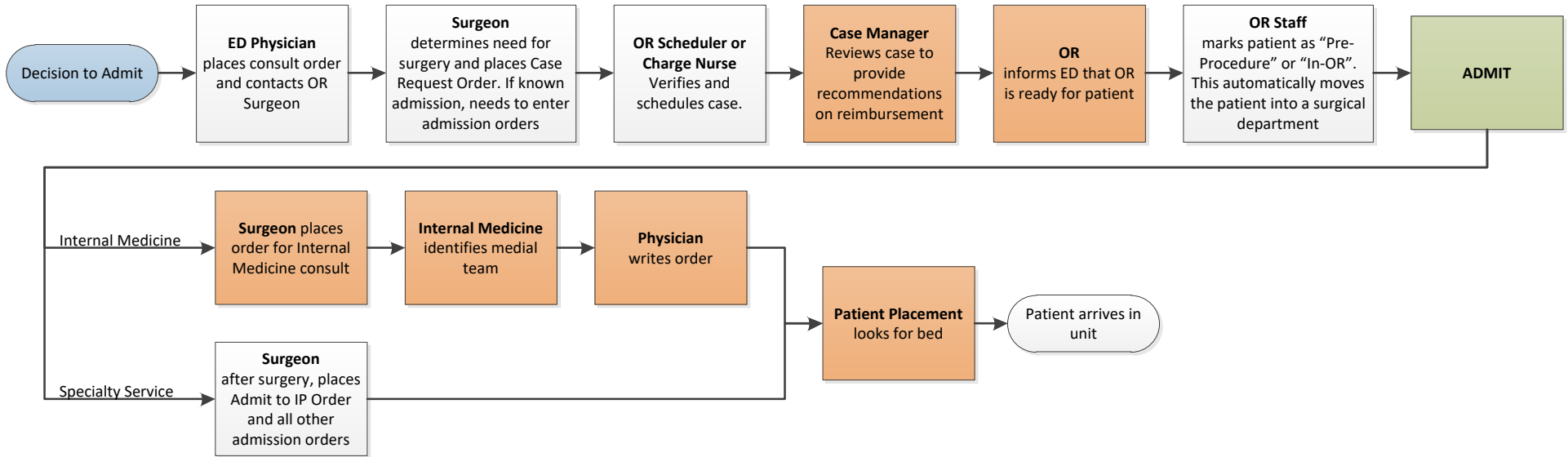


### OP Observation (EDOU) to Internal Medicine

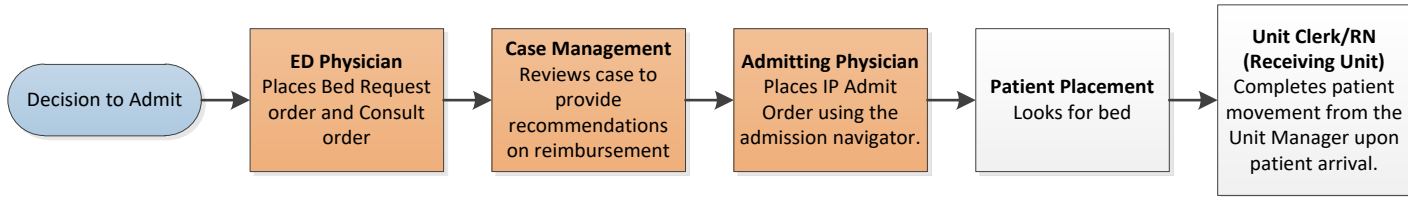


# CH Changes to Current Patient Movement

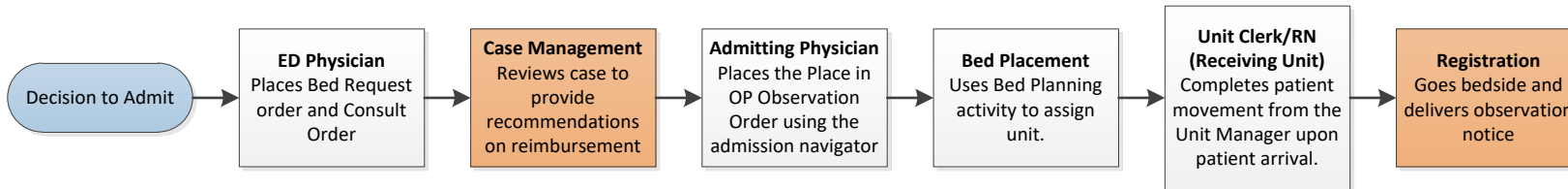
## CH ED to Periop Services – CH



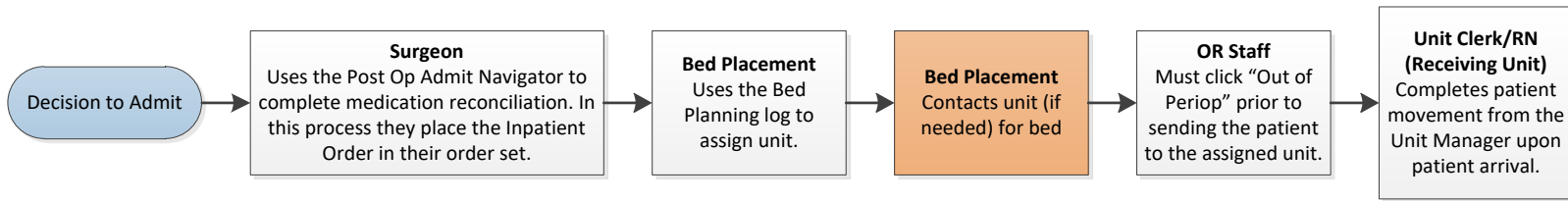
## CH ED to Unit – CH



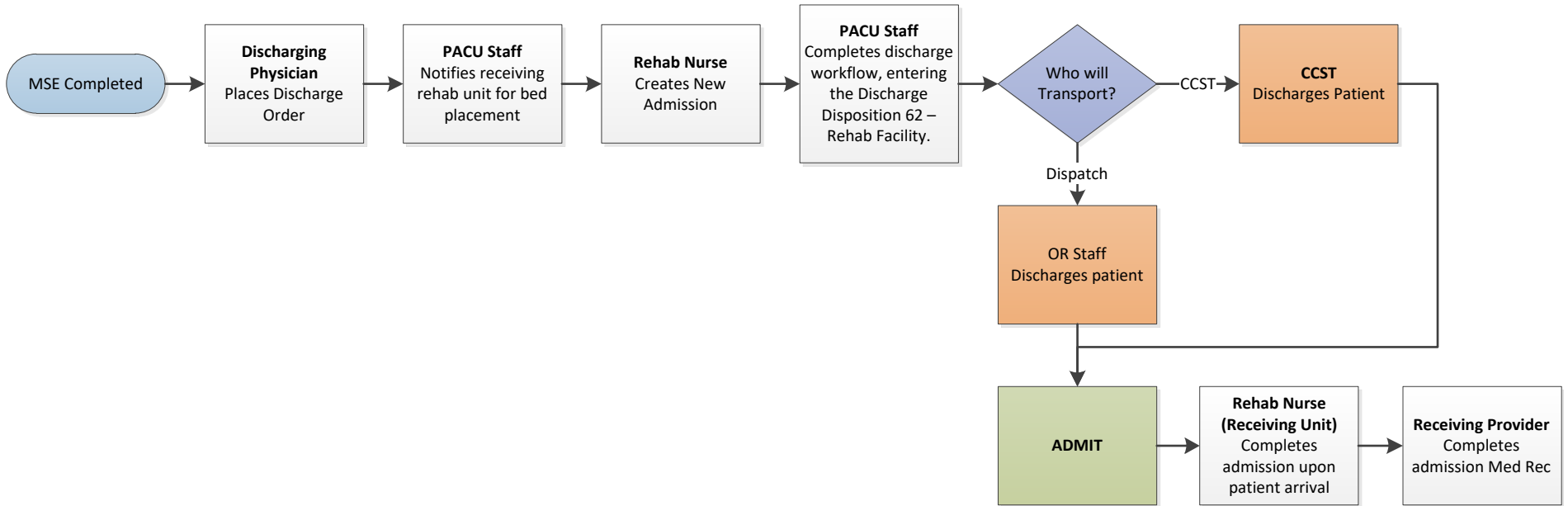
## CH ED to OP Observation



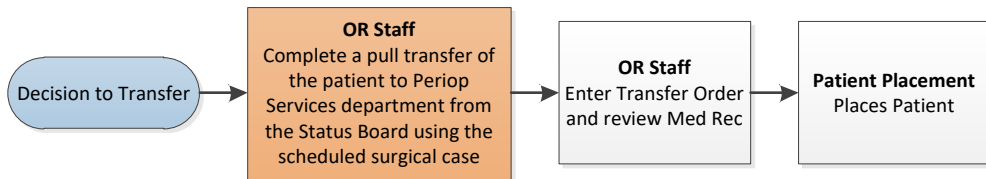
### Periop Services – CH to Unit – CH



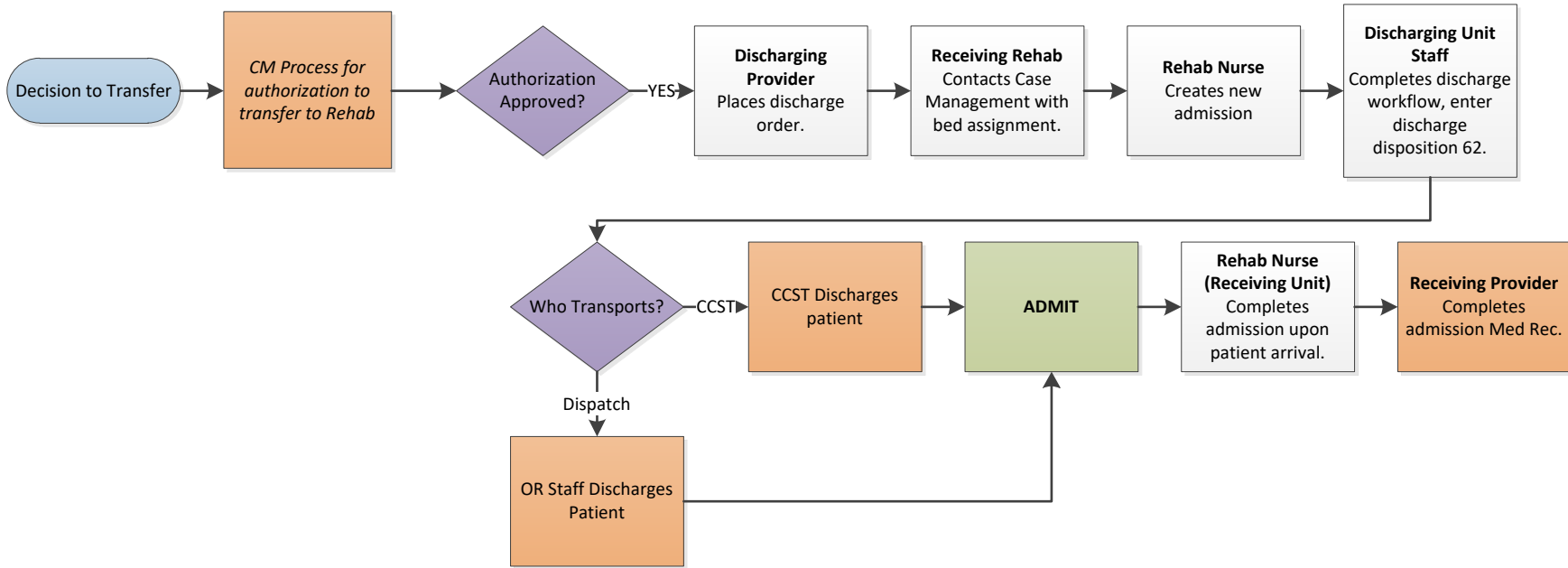
### Periop Services – CH to Rehab



### Unit – CH to Periop Services – CH



Unit – CH to Rehab



# CH New Patient Movement

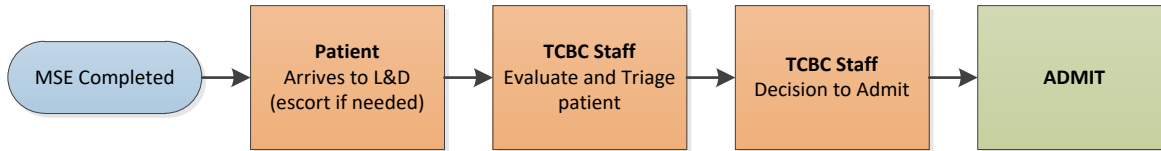
CH ED to Periop Service – Adult

Follow [Children’s Hospital to Medical Center](#)

CH ED to Unit – Adult

Follow [Children’s Hospital to Medical Center](#)

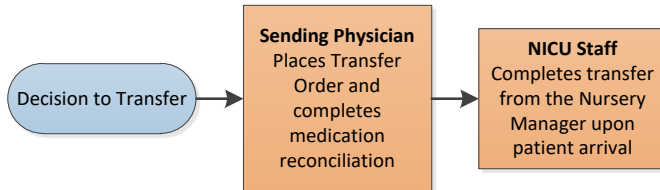
CH ED to TCBC



Unit – CH to Unit – Adult

Follow [Children’s Hospital to Medical Center](#)

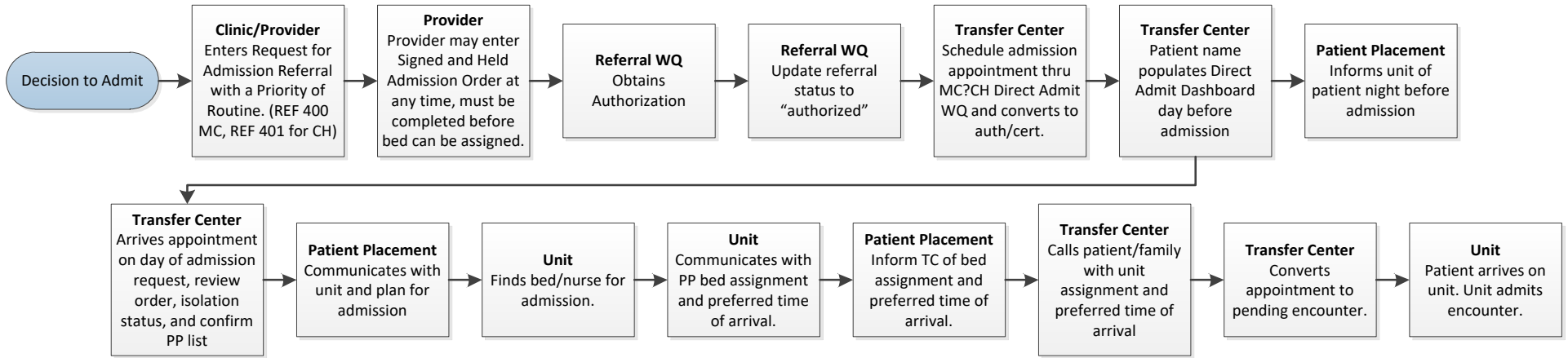
TCBC to NICU



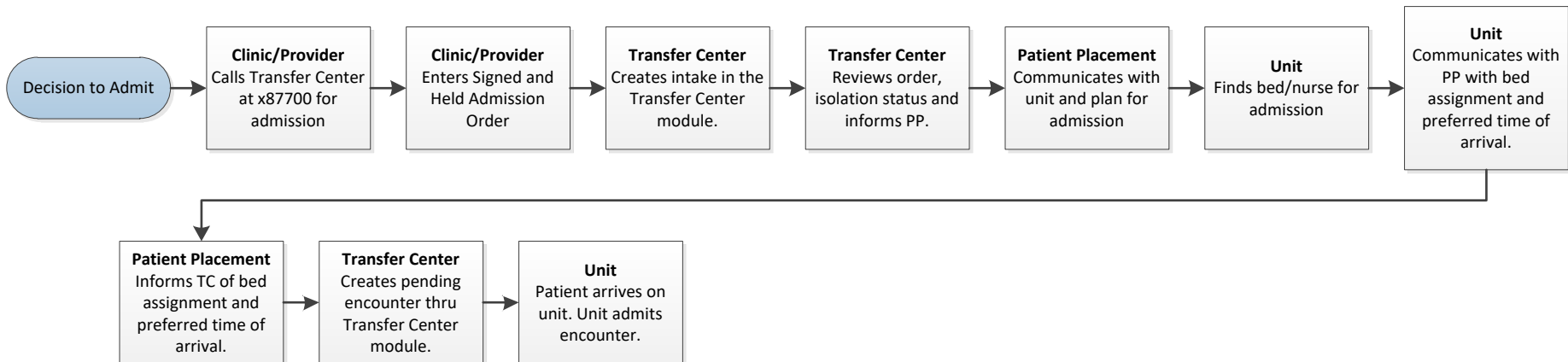


# Additional Admissions – New Process

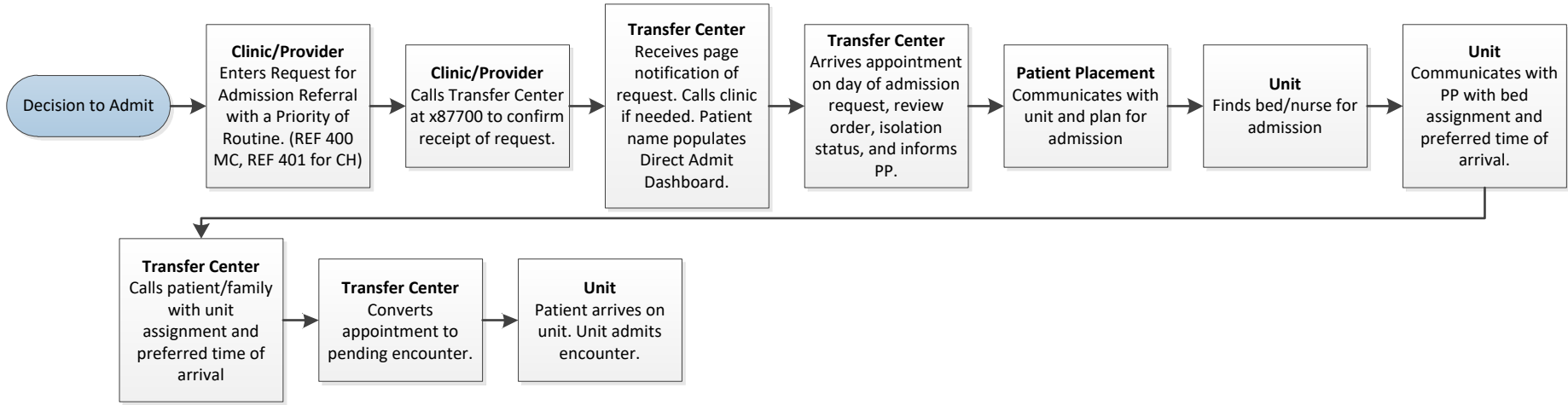
## Request for Routine Admit



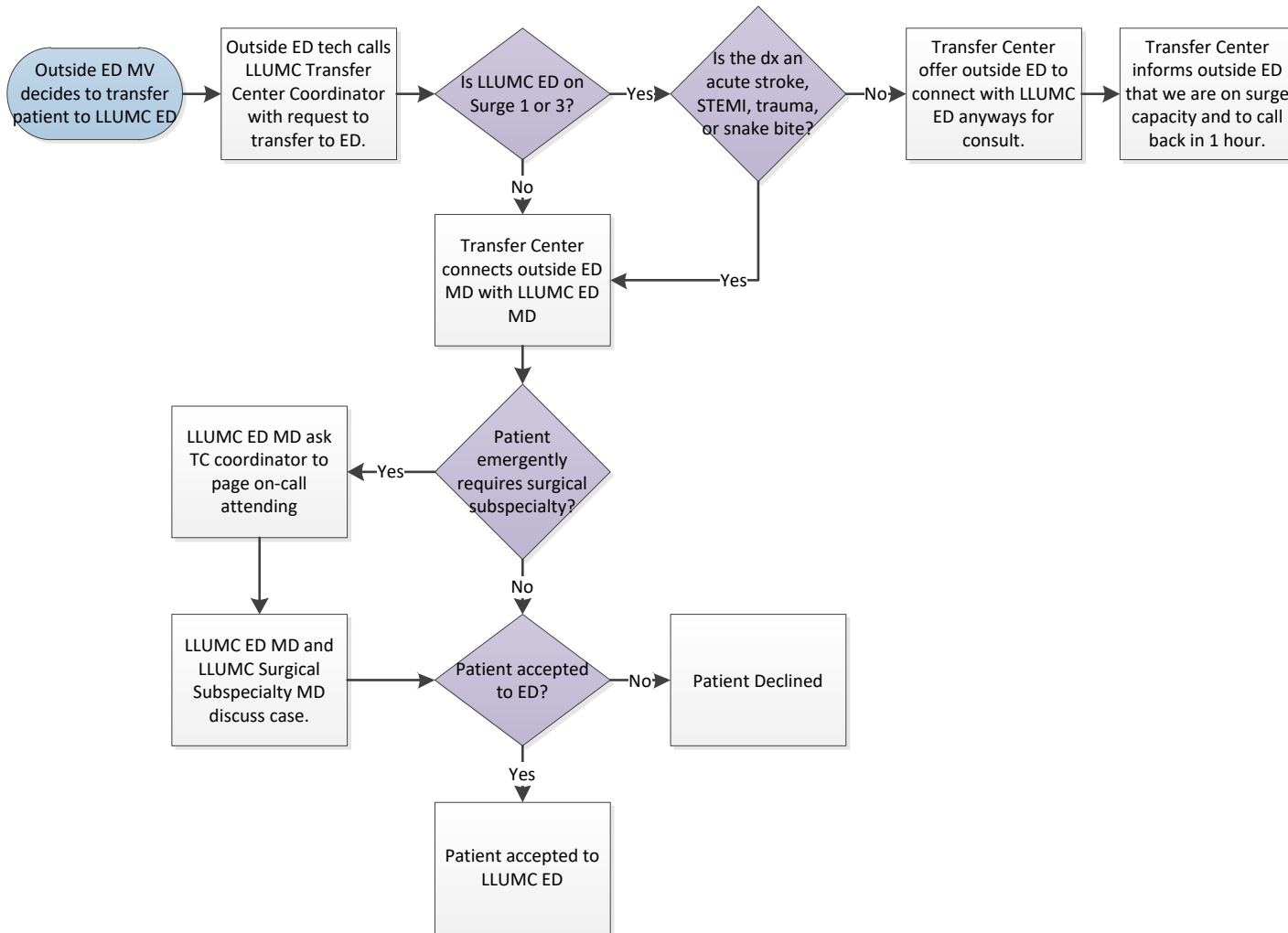
## Request for STAT/Urgent Admit – SACHS Clinic, LLUH Clinic After-Hours, LLUH Private – Privileged Providers



## Request for STAT/Urgent Admit – LLUH Clinics



## ED to ED



# Interfacility Adult IP to IP Request

